

E303 RS-485 Wi-Fi/BLE Gateway

Product Specification

Version	Issue date	Changes	Remark
1.0	2022/09/16	Initial Version	

IMPORTANT

This document contains important information and
Should not be disclosed to third parties without prior written consent of amazipoint technology Ltd.

2F,No. 113, Zhongyang Rd., Xindian Dist., New Taipei City, Taiwan(R.O.C)
www.amazipoint.com

Signature:

Author:	Reviewed by:	Approved by:	Remarks:
Sege Tsai			

1 Introduction

E303 is a gateway integrating WIFI, BLE, Ethernet and RS-485 interfaces. The Wi-Fi /BLE module adopts ESP32 as the module core chipset. There is a SD slot that could be used for storing data from connected sensors.

2 Features

- Operating system : FreeRTOS
- RS-485 interface : with isolation and TX/RX auto switch
- Ethernet : 10/100M
- SD card slot for data storage
- DC Supply voltage : 5~12V DC

3 Product Outlook



Figure 1 E303 front view

4 Specifications

4.1 Block diagram

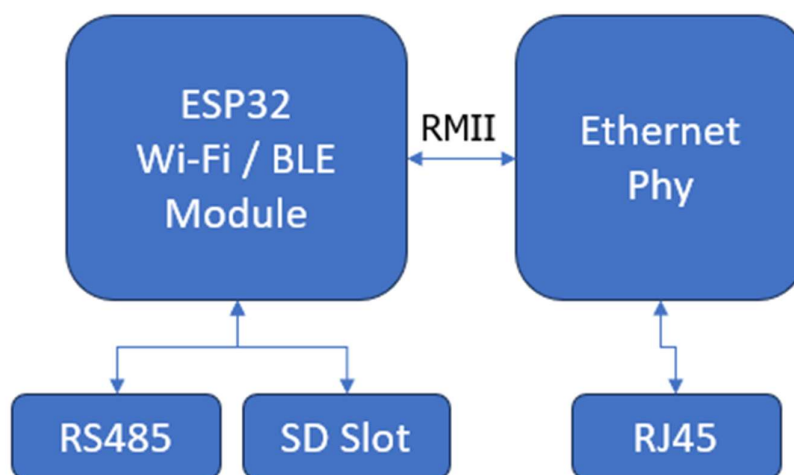


Figure 2 E303 block diagram

4.2 Major specifications

Items	Parameters
Wi-Fi	802.11 b/g/n; Soft-AP and Station mode
BT/BLE	V4.2BR/EDR BLE 5.0
RS-485	One optical isolated RS-485 port, Support Modbus Master/Slave Baud Rate: 1200bps – 57600bps
Power Input	DC +5V ~ 12 V
Power Consumption	< 1W
Dimension	104mm * 72mm * 26mm
Mounting	Standard DIN Rail

Table 1 Major specifications

4.3 IO interfaces

Name	Description	
RS-485 port	A	485 A/+ signal
	B	485 B/- signal
	EXTG	Isolated ground of RS485/DI)
DIP switch	485.TR	Terminal resister switch for RS-485, ON: effective, OFF : not effective

Table 2 IO interfaces

4.4 Buttons and Slots

Name	Function
------	----------

RESET Button	Defined by WIFI module firmware, refer to Table 6
WPS Button	Defined by WIFI module firmware, refer to Table 6
Micro SD slot	Micro SD connected to WIFI module

Table 3 Buttons and slots

4.5 LED indicators

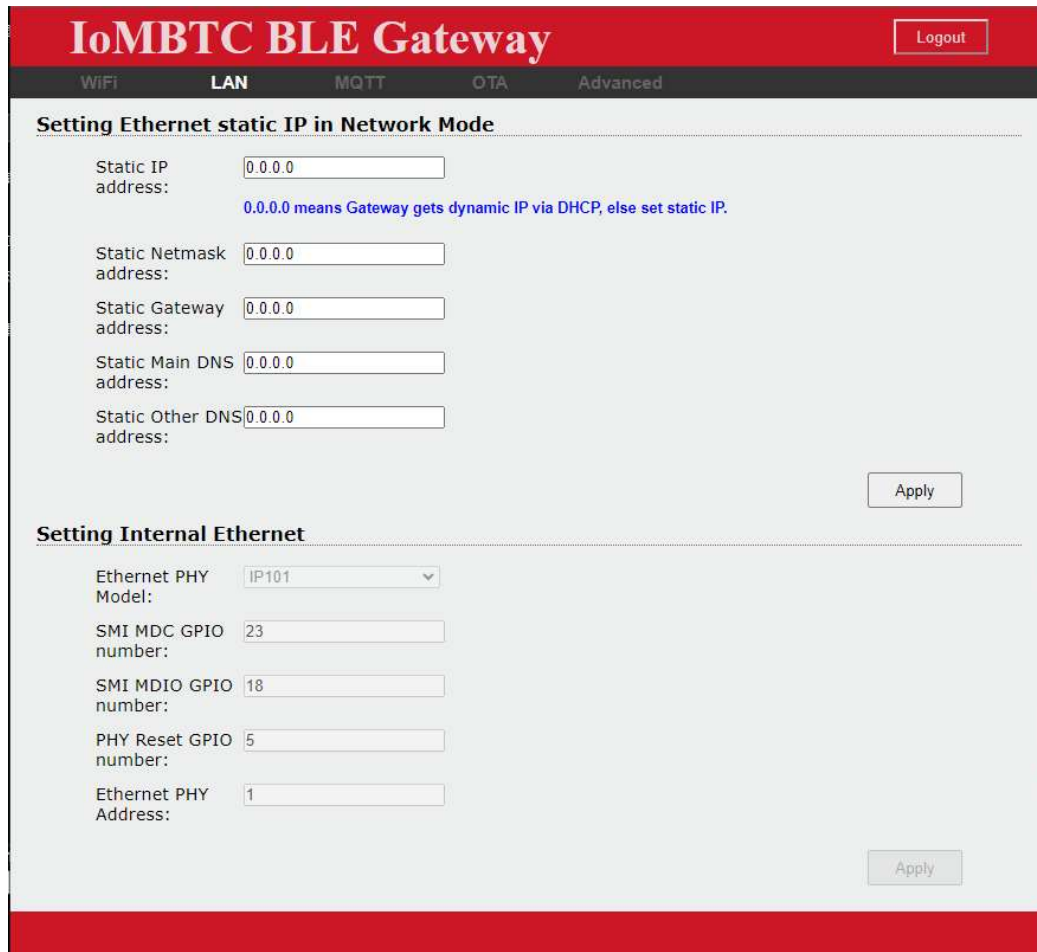
Name	Function
POWER LED	Power On/Off indication
TX LED	Blink when RS-485 transmitting data
RX LED	Blink when RS-485 receiving data
WIFI LED	Defined by WIFI module firmware, refer to Table 6

Table 3 Description of LED indicators

5 Firmware features

5.1 Device configuration

There is WebUI for configuring the parameters of BLE gateway such as the Wi-Fi connection, LAN and MQTT.



5.2 Firmware OTA

User could update firmware via OTA page of WebUI



5.3 Server communication protocol

E303 support MQTT for connection to IoT server. Figure 3 is a typical E303 application examples.

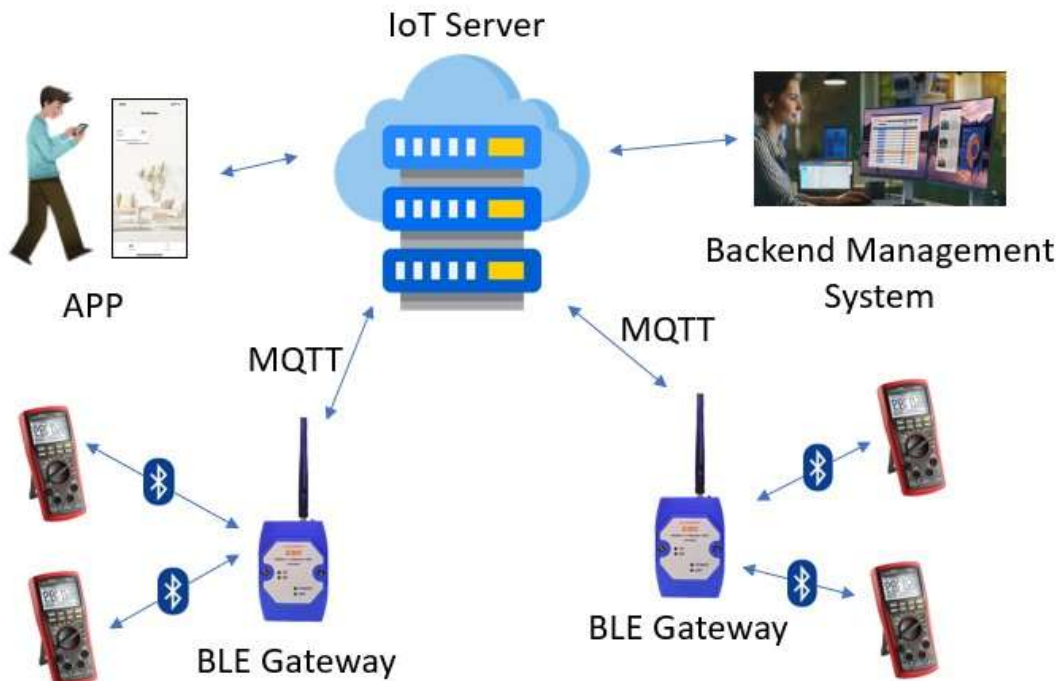


Figure 3 E303 typical application example